

Unit 356



Unit 356



# Desert Kibitzer



BRIDGE NEWS FOR SOUTHERN ARIZONA  
[www.SouthernArizonaBridge.com](http://www.SouthernArizonaBridge.com)

September 2011

## September Events

September 2nd-5th  
Sectional (El Palo)

September 9th -11th  
Sectional (Prescott)

September 18th  
Unit Game (Las Candelas)

September 23rd  
Unit Wide Championship

September 25th  
Board a Match (Adobe)

## UNIT 356 BOARD OF DIRECTORS

PRESIDENT: Barry Abrahams

VICE PRESIDENT: Christie McDougall

TREASURER: Carolyn Reynolds

SECRETARY: Jan Miller

TOURNAMENT CHAIRMAN: Steve Reynolds

PARTNERSHIPS: Rudy Martinez

CLUB MANAGER: Christie McDougall

EDUCATION: Adair Karlin

MEMBERSHIP: Joan Merrill

I/N REPRESENTATIVE: Jo-Ann Vaughn

KIBITZER: Christie McDougall

CONDUCT AND ETHICS: Dave Douglass

HOSPITALITY: Joan Merrill

PUBLICITY: Barry Abrahams

NOMINATING COMMITTEE: Dave Douglass

DISTRICT 17 REP: Darwin Afdahl

## Welcome New Members

Richard Coker



District 17 Official Website: [www.d17acbl.org/](http://www.d17acbl.org/)

Unit 356 Official website [www.SouthernArizonaBridge.com](http://www.SouthernArizonaBridge.com)

## July Monthly Masterpoint Winners

### Adobe Bridge Club

#### *Master Point Winners Under 1000*

(8.37) Linda Lineberry, (6.88) Suzanne Kinnear, (5.98) Duane Dietrich  
(5.87) Julie Harston, (5.47) Carolyn Blair

#### *Master Point Winners Over 1000*

(22.09) Ken Badertscher, (15.71) Carol Pilmar, (15.69) George Good  
(15.02) Lawrence De Lucia, (14.03) Michael Levy

### Green Valley Duplicate Bridge Club

#### *Top Ten Master Point Winners*

(9.28) Mary Baptist, (8.84) Bob Baptist, (8.84) Ron Payne, (7.73) Dave Sachs  
(7.73) Sue Sachs, (6.61) Allen Bowman, (6.48) John Arnold, (6.18) Jon Stromquist  
(5.96) Fran Herrmann, (5.23) Gene Maki

### Las Candelas Bridge Club

#### *Master Point Winners Under 500*

(10.08) Derek Graybill, (7.30) Lynda Thomas, (4.70) Vito Konur  
(4.07) Barbie Corbett, (4.04) John Purdy

#### *Master Point Winners 501-1500*

(15.02) Judson Jones, (14.35) Ann Day, (7.93) Aaron Carnes  
(6.95) Marty Chakmakian, (6.95) David Chakmakian

### Mountain View Bridge Club

#### *Top Master Point Winners Flight A*

(5.42) Sara Doonan, (5.42) Leo Pigaty, (4.10) Vicki Hanson  
(3.27) Barb Feeley, (2.99) Jo Ann Aiken

#### *Top Master Point Winners Flight B*

(3.73) Dick Quigg, (3.64) Betty Meyer, (3.64) Bob Murray  
(2.22) Sue Hagerty, (2.08) Amiel Goodman

### Saguaro Duplicate Bridge Club

#### *Top Master Point Winners*

(6.63) Joyce Lenz, (5.39) Fran Herrmann, (5.39) Franz Schatz, (5.33) Ernie Perkins  
(5.21) Ray Austin, (4.01) Pat Barnes, (4.01) Harry Peck, (3.51) Jeffrey Blake  
(3.31) Bill Hackbarth, (3.24) Ron Payne

### Thunder Mountain Bridge Club

(6.92) Paul Soper, (6.84) Marc Hay, (6.78) George Willis, (4.32) Diana Smith, (4.32)  
Margaret Wilder, (4.00) Judy Shelnett, (3.77) Joyce Davis, (3.68) Katy Vaughn, (3.36)  
Jim Handy, (2.93) Edna Parnell

### Over 70% Games

(73.70) Donald Hard - Judy Shelnett  
(71.88) Marc Hay - George Willis  
(71.06) Bob & Mary Baptist  
(70.81) Adair Carlin - Prudi Cain  
(70.52) Bill Barkley & Al Bowman  
(70.14) Paul Soper - George Willis  
(70.14) Jim Handy - Marc R Hay

**Las Candelas** *By Sunny Bal/Eric Swanson*

Master Point Winners Open

(16.46) Jean Montague, (15.02) Judson Jones, (14.35) Ann Day  
(12.35) Dave Douglass, (11.83) Marian Wilson

65% Games

(70.81) Adair Carlin - Prudi Cain; (69.88) Dave Douglass - Derek Graybill  
(68.29) Dave Douglass - Derek Graybill; (65.54) David - Marty Chakmakian  
(65.51) Raymond Grady - Sunand Bal; (65.51) David Rinehar - Nicolai Minenko  
(65.51) Robert Hinkle - Lynda Thomas; (65.22) Donna Depesa - Barbara Feely

Announcements

Las Candelas has a new website. Check it out at [www.bridgewebs.com/lascandelas](http://www.bridgewebs.com/lascandelas).

There is a New NLM game at Las Candelas on Fridays 10 am to about 1 pm.  
NLMs now have a place to play every day of the week.

**Saguaro** *By Doris Kuzmak*

High Percentage Games for July:

(68.46) Betsy Krystynak - Charlotte Brody  
(65.34) JoAnn Day - Shelton Howland

Regular Club Championship game will be held on September 3, 2011.

Check out the web page for upcoming Special Events.

**Green Valley** *By Allen Bowman*

Top Games

(71.06) Bob & Mary Baptist; (70.52) Bill Barkley & Al Bowman; (67.13) Arne &  
Gene Maki; (66.67) Dave & Sue Sachs; (65.48) Fran Herrmann & Ron Payne;  
(65.28) Bob & Mary Baptist; (65.28) Chris Martin & Ron Payne; (65.28) Bob & Mary  
Baptist

Top Games (49ers)

(71.43) Jim & Dawn Cate

### **Mountain View** *By JoAnn Aiken*

Pairs with better than 65% games in July included:

(66%) Barb Feeley - Val Ackerman

(65%) Sheila and Jeff Lesser

Maggie Jones Memorial Game September 27th.

### **Thunder Mountain** *By Chris Hasney*

There were three 65% and above games in July, including four huge games of over 70%: (73.70) Donald Hard - Judy Shelnutt; (71.88) Marc Hay - George Willis (70.14) Paul Soper - George Willis; (70.14) Jim Handy - Marc R Hay (67.71) Joyce Davis - Roy Lea; (66.67) Richard Turke - Carole Dean (66.67) Diana Smith - Margaret Wilder; (65.56) Marc R Hay - Jim Handy (65.48) Paul Soper - Katy Vaughn

Congratulations!

### **Tucson Charity Bridge** *By Ruth Houkom/Brian Gersten*

Top Games for July

(67.00) Sally Berk - Mike Berk; (64.50) Shirley Gardner - Karen Balch

(63.50) Brian Gersten/Sari Gersten; (62.84) Sally Berk - Mike Berk

We are excited to announce our fall classes which will begin on 9/8. Joan Ryan, our instructor, comes to us with lots of great experience and wonderful references from her students. Please visit our website at [www.TucsonCharityBridge.com](http://www.TucsonCharityBridge.com) for complete details.

### **Adobe** *By Steve Reynolds*

Summer at the Adobe was a great success. There were a lot of points and many free games awarded. I hope everyone who participated in the contests had a good time. As always the Saturday specials were a big draw with excellent goodies provided by the club. As we move into the fall there will be new contests and more specials. On Sept. 5 we will celebrate Ed Temples 100th birthday, come join us for this special event. The fall classes also start on Sept. 5th so join us and improve your game at a very modest cost with exciting teachers. See you all soon.

#### Games over 65%

(69.44) Martin Schiff Jr - Michael Levy

(69.30) David Rinehart - Randall Mandigo

(69.01) Cookie Evans - Henry Buch

(68.13) B Robert Simrak - Nancy Atherton

(67.50) Duane Dietrich - Irwin Rosman

(67.26) Diane Frohling - Jean B Austin

(66.96) Carol Pilmar - Kenneth Badertscher

(66.48) Edward Helpert - Louis Herbster

(66.38) Louis Herbster - Phillis Herbster

(66.17) Nancy Atherton - Kenneth Badertscher

(65.53) Ernest McCray - Ruth McCray

(65.48) Sarah Baumann - Cam Mette

## Recent Rank Advances

### New Junior Masters:

James Young

### New Club Masters:

Dee M Donahue

Sharon Minock

Richard L Naughton

### New Bronze Life Masters:

Betsy Krystynak

### New Silver Life Masters:

Clarence A Mette III

### New Gold Life Masters:

Donna DePesa

## Unit Event News

Unit 356 is moving into the tournament season again. In addition to the fall and spring sectionals there are NLM tournaments and a regional on the near horizon.

Look out for the special games - the board a match is always exciting a easy to participate in, come and learn one the more exciting types of contests. The Swiss team pro-am will be a wonderful opportunity to play with your favorite "pro". It is always very well attended and since it is coming soon ( Oct. 9th) make your reservations as soon as possible.

The tournaments coming up will have fabulous food and a new schedule which will make the games more accessible for everyone. Also, if you would like to help with any of these tournaments, please contact the tournament chairman, Steve Reynolds, at tvs1@cox.net.

## Election Timelines

Nominating Committee Appointed by August 16 2011 (60 days prior to Annual Membership Meeting). The nominating committee is Dave Douglass (chair), Joy Rieckers, Clair Kretschmann and Lois Jameson.

Slate of eligible nominees to be posted before September 26, 2011. Board membership requires a Unit member to have been in continuous good standing in this Unit for at least twelve months prior to serving. Unit members are not eligible for Board membership while they: (a) Have a controlling financial interest in a bridge club; or (b) On a continuing regular basis work for payment from the ACBL.

Additional nominations by October 6, 2011. Additional nominations are made by the membership, but such nominations shall be in writing, signed by at least ten members in good standing, and must be received by the Secretary of the Unit at least ten days prior to the Annual Meeting.

Annual Membership Meeting on October 16, 2011

Ballots mailed to membership with nominee bios by October 26, 2011. Ballots can be mailed back or dropped at clubs.

Voting will close November 18, 2011. Ballots will be counted by November 26, 2011.

Election results will be recorded in the first meeting of the new board of directors (January 2012).

## Unit Event Results

### August 14 – Unit Game Las Candelas (14.5 tables open)

	A	B	C
Dave Douglass & Derek Graybill	1		
Mike Smith & Dan Nelson	2	1	
Ginny Rutledge & Kenneth Badertscher	3		
Carolyn & Steve Reynolds	4		
David & Marty Chakmakian	5	2	
Marie Heald & Eleanor Horton	6		
Fran Hammond & Mary Maxwell		3	
Lanie Constable & Walter Mann		4	1
Bill Schelstrate & Margaret Halverson		5	
Ann Kuperberg & Richard Quigg		6	2
Betty Compton & Lavidia Noel			3

### August 14 —Unit game Las Candelas (7 tables NLM)

	D	E	F
North South			
Carolyn Blair & Bill Robinson	1	1	1
Mary Ahearn & Carol Erbeck	2	2	
Helene & Marc Sbar	3		2
East West			
Marlee Milman & David Burks	1	1	1
Doug Austin & Duane Dietrich	2	2	
Jim Miller & Dave Miller	3		2

### I/N Corner by Jo-Ann Vaughn

Wow! We did it again. 7 Tables! We have successfully maintained a NLM section at the Unit Game throughout the summer. I really appreciate everyone's effort and support to accomplish this. A special thank you to Marge Curvin who creates the flyer every month! She really does a great job.

The Unit Game this month is Sunday, Sept 18<sup>th</sup> at Las Candelas. A light lunch is served prior to the beginning of the game at 1 PM. Please call Las Candelas (696-9101) to make your reservation. If you need a partner please let Marge Curvin at [m.curvin@yahoo.com](mailto:m.curvin@yahoo.com) or 319-1081. Remember there are extra black points awarded for this game!

Elsewhere in the Kibitzer is information about the upcoming Pro/AM Swiss Team Event on Sunday, October 9<sup>th</sup> at Adobe Bridge Club. Again, if you need any assistance finding a Pro, an AM, or a team, please contact Marge Curvin.

**Don't forget to check out the classes offered by your local clubs. This is a great way to learn some new skills prior to the upcoming tournaments this fall in Tucson.** If the class times are not convenient for you, there are multiple offerings on the internet.

As the I/N representative to the Unit Board, I represent your voice to the Unit Board. If you have any suggestions, questions or concerns, please contact me. I look forward to hearing from you. You may contact me at [jhvaughn49@gmail.com](mailto:jhvaughn49@gmail.com)

See you at the table!  
Jo-Ann



THE POWER OF TENS

By: Brian Gunnell

	♠ A97 ♥ K976 ♦ A874 ♣ A6	
♠ J43 ♥ J3 ♦ KQ62 ♣ J873	North West East South	♠ Q852 ♥ 8542 ♦ J3 ♣ KQ2
	♠ KT6 ♥ AQT ♦ T95 ♣ T954	

*None Vulnerable*

*North East South West*

*1NT Pass ??*

Put yourself in the South chair. Your partner opens a 15-17 1NT and you have to decide whether to invite game, or whether to bid 3NT all by yourself.

The usual benchmark for going to game unaided is "a good 9 or better". One thing that makes South's 9-count not so good is the square shape (3-3-3-4), you can almost subtract a HCP for that alone. Does this make South's hand a "bad 9"? No, not at all, look at that awesome array of intermediate cards! All those lovely Tens may not count for anything on the 4-3-2-1 HCP scale but they certainly count for something in the play of the hand, especially in No Trump contracts. So, South disregards the dismal distribution and, rejoicing in those splendid Tens, goes directly to 3NT.

Declarer has a minimum 1NT opening (and would have declined a game invitation) but, even so, 3NT is a fine contract. The black Tens protect Declarer against the enemy suits and the red Tens help Declarer to build tricks in his own suits. It will be 10 tricks on most lines of play, but check out what happens if all of South's Tens are swapped with East's lowest spot card in each suit. Now it's hard to see how Declarer can scrape up more than 7 tricks! Here's to those Tens, the most underrated cards in the deck!

Visit [www.acbl.org](http://www.acbl.org) for more about the fascinating game of bridge or email [marketing@acbl.org](mailto:marketing@acbl.org).

## WEEKLY CLUB SCHEDULES

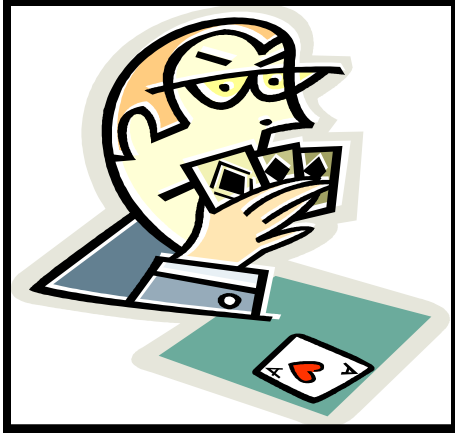
Club	Sunday	Monday	Tuesday	Wednesday	Thursday	Friday	Saturday
<b>Adobe Bridge Club</b> (Gene McDougall, Club Manager) <a href="mailto:adoblebridge@qwestoffice.net">adoblebridge@qwestoffice.net</a> 3727 E Blackledge - <b>795-2441</b> <a href="http://www.adobebridgeclub.org">www.adobebridgeclub.org</a>	<b>1:00pm</b> Open	<b>12:30pm</b> Open	<b>12:30pm</b> Open & NLM	<b>12:30pm</b> Open	<b>12:30pm</b> Open & NLM	<b>12:30pm</b> Open	<b>9:00am</b> NLM <b>1:00pm</b> Open
<b>Green Valley Duplicate Bridge Club</b> Games Open to Members and Guests Only (Al Bowman—Club Manager) <a href="mailto:albowmangv@cox.net">albowmangv@cox.net</a> <a href="http://members.cox.net/gvbridge">members.cox.net/gvbridge</a>		<b>1:00pm</b> Inv Canoa			<b>1:00pm</b> Inv Canoa	<b>1:00pm</b> Inv Canoa	
<b>High Desert Hands</b> (Carol Lee Erbeck, Club Manager) <a href="mailto:carol@crazyedoptical.com">carol@crazyedoptical.com</a> 1270 Treasure Road, Sunsites - <b>559-7894</b>						<b>12:00pm</b>	
<b>Las Candelas Bridge Club</b> (Sunny Bal, Club Manager) <a href="mailto:contact@lascandelasbridgeclub.com">contact@lascandelasbridgeclub.com</a> 401 E. Limberlost - <b>696-9101</b> <a href="http://www.bridgewebs.com/lascandelas">www.bridgewebs.com/lascandelas</a>		<b>12:30pm</b> Open	<b>9-11am</b> Bid and Play  <b>12:30pm</b> Open & NLM	<b>12:30pm</b> Open & NLM <b>6:30p</b> Open	<b>12:30pm</b> Open	<b>10:00am</b> Open & NLM	
<b>Mountain View Duplicate Bridge Club</b> (Jo Ann Aiken, Club Manager) <a href="mailto:jotax123@aol.com">jotax123@aol.com</a> 38759 Mountain View Blvd, Saddlebrooke - <b>818-1727</b> <a href="http://Mountainviewbridgeclub.com">Mountainviewbridgeclub.com</a>			<b>1:00pm</b>			<b>1:00pm</b>	
<b>Queen of Hearts Bridge Club 744-4212</b> (James Richhart, Manager)— <a href="mailto:richhart@comcast.net">richhart@comcast.net</a> On Dove Mountain Rd, 2.3 Mi North off Tangerine Rd					<b>9:00am</b> Thru April 2010		
<b>Saguaro Duplicate Bridge Club</b> (Doris Kuzmak, Director/Manager) <a href="mailto:dldkay@cox.net">dldkay@cox.net</a> <b>625-4027 or 237-1959</b> —600 S La Canada, Green Valley, Parish Hall at St. Francis in the Valley Episcopal Church <a href="http://www.members.cox.net/saguarodbc2">www.members.cox.net/saguarodbc2</a>							<b>12:30pm</b> Open
<b>Thunder Mountain Bridge Club</b> 608 E Fry Boulevard, Sierra Vista <b>803-9564, 432-3883 or dhard@cox.net</b> <a href="http://www.sierravistabridge.com">www.sierravistabridge.com</a>		<b>12:30pm</b>		<b>12:30pm</b>	<b>6:30pm</b>	<b>12:30pm</b>	
<b>Tucson Charity Bridge</b> (Ruth Houkom, Club Manager) 5360 E Pima Street, Tucson <a href="mailto:info@tucsoncharitybridge.com">info@tucsoncharitybridge.com</a> OR <a href="http://www.tucsoncharitybridge.com">www.tucsoncharitybridge.com</a>		<b>5pm</b> NLM (Ventana)			<b>10:00am</b> NLM		

## SPECIAL EVENTS SCHEDULE – September 2011

Sunday	Monday	Tuesday	Wednesday	Thursday	Friday	Saturday
				September 1	September 2	September 3
					<b>LC CC</b> <b>Sectional</b> (El Paso)	<b>S CC</b> <b>Sectional</b> (El Paso)
September 4	September 5	September 6	September 7	September 8	September 9	September 10
<b>Sectional</b> (El Paso)	<b>AD CC</b> <b>Sectional</b> (El Paso)				<b>AD CC</b> <b>Sectional</b> (Prescott)	<b>Sectional</b> (Prescott)
September 11	September 12	September 13	September 14	September 15	September 16	September 17
<b>Sectional</b> (Prescott)	<b>LC CC</b>	<b>AD CC &amp; B</b>				
September 18	September 19	September 20	September 21	September 22	September 23	September 24
<b>Unit Game</b> (Las Candelas)			<b>AD C</b>		<b>Unit Wide</b> <b>Championship</b> (Local Clubs)	
September 25	September 26	September 27	September 28	September 29	September 30	
<b>Board A Match</b> (Adobe)		<b>MV Memorial Game</b>	<b>LC CC</b>		<b>LC B</b>	

*Abbreviations: AD—Adobe, LC—Las Candelas, MV—Mountain View, S—Saguaro, TM—Thunder Mountain, B—Birthdays, BAM—Board-a-Match, CAC—Club Appreciation Championship, CC—Club Championship, CG—Charity Game, MAG—Member Appreciation Game, NLM—Non Life Master, IN—Intermediate/Novice, SFG—Special Fund Game, SR—Sectionally Rated, ST—Swiss Teams, UWC—Unit Wide Championship*





What: Pro/Am Swiss Team Game

When: Sunday, October 9th  
Light Lunch 12:30  
Game time 1:00 PM

Where: Adobe

Mark your calendars for the Pro/Am Swiss game.

Start getting your teams together and use the attached  
sign up sheet to register.

If you need assistance in finding a partner, a pro or am  
or a team. contact Marge Curvin

m.curvin@yahoo.com  
520-319-1081

See you at the table.

Jo-Ann Vaughn  
Unit 356 I/N Rep  
jhvaughn49@gmail.com



# Pro-Am Swiss Team – Registration Form

Sunday, October 9<sup>th</sup> 2011  
12:30 PM (1 PM game start) at Adobe

There are new definitions for a Pro and an Am for the January 30th Pro-Am Swiss Game. A Pro-Am Pair is composed of:

- One player who has less than 300 masterpoints and is not a Life Master, called an Am, and
- One player who has 300 or more masterpoints regardless of whether they are a Life Master, called a Pro.

**Both of the above conditions must be true according to ACBL’s records on January 23, 2011.** This means that you must think ahead about when your points are being recorded at ACBL’s headquarters. One advantage of the new definitions is that all players are eligible to play in the game in one category or the other.

A Pro-Am Team is composed of two Pro-Am Pairs.

**It shouldn’t be any surprise that communicating with a partner you have never played with before is difficult and may lead to mistakes.** So we suggest that you play a few times with your Pro partner before the game, decide on your conventions, and fill out your convention card. But to be fair the Pro and Am should not be regular partners.

Adobe Bridge Club has a maximum of 30 tables (we had 30 tables in August), eligibility and stratification (by team average) need to be determined ahead of time. Therefore please register by October 2 by filling out this form and giving it to the director at any of the clubs. You can also email your registration and last minute changes to Marge Curvin @ [m.curvin@yahoo.com](mailto:m.curvin@yahoo.com) or 319-1081.

A light snack will be provided before the game, so please arrive around 12:30 PM. This will also allow time for you to discuss your team’s strategy and for the director to finalize everything for the game.

Pro-AM Team (must provide ACBL number):

**Pro’s Name:** \_\_\_\_\_ **ACBL #:** \_\_\_\_\_

**Am’s Name:** \_\_\_\_\_ **ACBL #:** \_\_\_\_\_

**Pro’s Name:** \_\_\_\_\_ **ACBL #:** \_\_\_\_\_

**Am’s Name:** \_\_\_\_\_ **ACBL #:** \_\_\_\_\_

If you need a partner or team, talk to Marge Curvin at a game, email her at [m.curvin@yahoo.com](mailto:m.curvin@yahoo.com), or call her at (520) 319-1081.

Good Luck!!